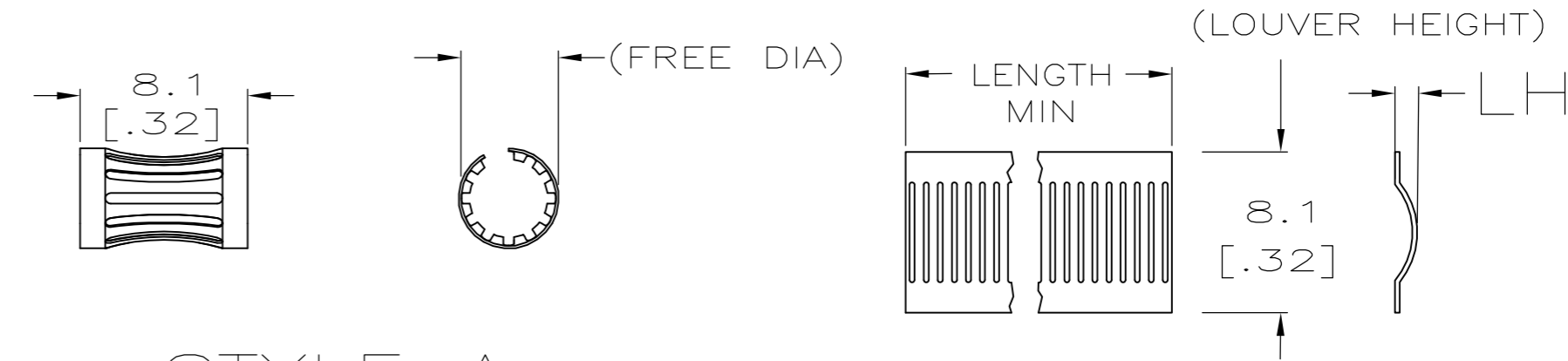


THIS DRAWING IS UNPUBLISHED. RELEASED FOR PUBLICATION
 © COPYRIGHT - By - ALL RIGHTS RESERVED.

| LOC | DIST | REVISIONS | | | | | |
|-----|------|-----------|-----|---------------------------|-----------|-----|------|
| FT | 0 | P | LTR | DESCRIPTION | DATE | DWN | APVD |
| | | V | | REVISED PER ECO-15-011608 | 04NOV2015 | NK | MZ |

| STYLE | (FREE DIA) | LH | LENGTH | MAT'L (NOTE) | MATING PIN φ REF | PLATING (NOTE NO.) | NUM LOUV | MAT'L THK | REF | PART NUMBER | |
|--------------------------|------------|--------|--------|--------------|------------------|--------------------|----------|--------------|-------|-------------|----------|
| A | [.46] | [.028] | -- | 12 | 9.5 [.375] | 6 | 38 | 0.18 [.007] | 04121 | 5-192043-0 | |
| A | [.46] | [.028] | -- | 12 | 9.5 [.375] | 1-2 | 38 | 0.18 [.007] | 04128 | 4-192043-9 | OBSOLETE |
| A | [.46] | [.028] | -- | 12 | 9.5 [.375] | UNPL | 38 | 0.18 [.007] | 04120 | 4-192043-8 | OBSOLETE |
| A | [.55] | [.024] | -- | 12 | 9.5 [.375] | 6 | 38 | 0.15 [.006] | 04108 | 4-192043-7 | △19 |
| A | [.60] | [.028] | -- | 12 | 9.5 [.375] | 3-2 | 39 | 0.15 [.006] | -- | 4-192043-6 | △19 |
| A | [.55] | [.024] | -- | 12 | 9.5 [.375] | 3-2 | 38 | 0.15 [.006] | 04053 | 4-192043-5 | |
| A | [.53] | [.024] | -- | 12 | 9.5 [.375] | 1-2 | 38 | 0.15 [.006] | 04067 | 4-192043-4 | OBSOLETE |
| A | -- | -- | -- | 12 | 9.5 [.375] | 1-2 | 38 | 0.15 [.006] | 04092 | 4-192043-3 | OBSOLETE |
| SUPERSEDED BY 4-192043-1 | | | | | | | | | | | |
| A | [.55] | [.024] | -- | 12 | 9.5 [.375] | UNPL | 38 | 0.15 [.006] | 04071 | 4-192043-1 | OBSOLETE |
| A | [.55] | [.026] | -- | 12 | 9.5 [.375] | 5-2 | 38 | 0.12 [.005] | -- | 4-192043-0 | OBSOLETE |
| A | [.55] | [.026] | -- | 13 | 9.5 [.375] | 1-2 | 38 | 0.12 [.005] | 04174 | 3-192043-9 | △19 |
| A | [.55] | [.026] | -- | 13 | 9.5 [.375] | UNPL | 38 | 0.12 [.005] | -- | 3-192043-8 | △19 |
| A | [.54] | [.026] | -- | 12 | 9.1 [.359] | 3-2 | 36 | 0.18 [.007] | 04204 | 3-192043-7 | OBSOLETE |
| A | [.54] | [.026] | -- | 12 | 9.1 [.359] | 1-2 | 36 | 0.18 [.007] | 04184 | 3-192043-6 | OBSOLETE |
| A | [.54] | [.026] | -- | 12 | 9.1 [.359] | UNPL | 36 | 0.18 [.007] | 04183 | 3-192043-5 | OBSOLETE |
| A | -- | -- | -- | 12 | 8.9 [.359] | 3-2 | 35 | 0.115 [.006] | 04178 | 3-192043-4 | OBSOLETE |
| A | -- | -- | -- | 12 | 8 [.315] | 3-2 | 30 | 0.18 [.007] | 04177 | 3-192043-3 | OBSOLETE |
| A | -- | [.026] | -- | 12 | 8 [.315] | 3-2 | 29 | 0.18 [.007] | 04179 | 3-192043-2 | OBSOLETE |
| A | [.38] | [.026] | -- | 12 | 8 [.315] | 1-2 | 29 | 0.18 [.007] | 04206 | 3-192043-1 | OBSOLETE |
| A | [.38] | [.026] | -- | 12 | 8 [.315] | UNPL | 29 | 0.18 [.007] | 04185 | 3-192043-0 | OBSOLETE |
| A | [.43] | [.024] | -- | 12 | 8 [.315] | 3-2 | 32 | 0.15 [.006] | -- | 2-192043-9 | △19 |
| A | [.40] | [.024] | -- | 12 | 8 [.315] | 1-2 | 31 | 0.15 [.006] | -- | 2-192043-8 | △19 |
| A | [.43] | [.024] | -- | 12 | 8 [.315] | 1-2 | 32 | 0.15 [.006] | 04076 | 2-192043-7 | |
| A | [.43] | [.024] | -- | 12 | 8 [.315] | UNPL | 32 | 0.15 [.006] | 04052 | 2-192043-6 | OBSOLETE |
| A | [.40] | [.026] | -- | 13 | 7.9 [.312] | UNPL | 32 | 0.12 [.005] | 04079 | 2-192043-5 | OBSOLETE |
| A | -- | -- | -- | 12 | 7.5 [.296] | 1-2 | 32 | 0.18 [.007] | 04189 | 2-192043-4 | OBSOLETE |
| A | -- | -- | -- | 12 | 7.49 [.295] | 3-2 | 30 | 0.15 [.006] | 04051 | 2-192043-3 | OBSOLETE |
| A | -- | -- | -- | 12 | 7.44 [.293] | 3-2 | 29 | 0.12 [.005] | 04050 | 2-192043-2 | OBSOLETE |
| A | -- | -- | -- | 12 | 7.14 [.281] | 3-2 | 28 | 0.20 [.008] | 04049 | 2-192043-1 | OBSOLETE |
| A | [.45] | [.024] | -- | 12 | 7.1 [.280] | 3-2 | 28 | 0.15 [.006] | 04106 | 2-192043-0 | |
| A | [.45] | [.024] | -- | 12 | 7.1 [.280] | UNPL | 28 | 0.15 [.006] | 04199 | 1-192043-9 | OBSOLETE |
| A | -- | -- | -- | 12 | 7 [.276] | 3-2 | 27 | 0.12 [.005] | 04047 | 1-192043-8 | OBSOLETE |
| A | -- | -- | -- | 12 | 6.45 [.254] | 7-2 | 26 | 0.15 [.006] | 04065 | 1-192043-7 | OBSOLETE |
| A | [.35] | [.024] | -- | 12 | 6.45 [.254] | 3-2 | 26 | 0.15 [.006] | 04075 | 1-192043-6 | |
| A | [.35] | [.024] | -- | 12 | 6.45 [.254] | 1-2 | 26 | 0.15 [.006] | 04086 | 1-192043-5 | OBSOLETE |
| A | [.35] | [.024] | -- | 12 | 6.45 [.254] | UNPL | 26 | 0.15 [.006] | 04046 | 1-192043-4 | OBSOLETE |
| A | [.50] | [.026] | -- | 13 | 6.45 [.254] | UNPL | 26 | 0.12 [.005] | 04093 | 1-192043-3 | OBSOLETE |
| A | [.29] | [.024] | -- | 12 | 6.35 [.250] | 3-2 | 26 | 0.20 [.008] | 04045 | 1-192043-2 | △19 |
| A | [.29] | [.024] | -- | 12 | 6.35 [.250] | 1-2 | 26 | 0.20 [.008] | 04116 | 1-192043-1 | △19 |
| SUPERSEDED BY 1-192043-6 | | | | | | | | | | | |
| A | [.29] | [.016] | -- | 13 | 6.35 [.250] | UNPL | 26 | 0.12 [.005] | 04082 | 192043-9 | OBSOLETE |
| A | [.28] | [.024] | -- | 12 | 6 [.237] | 3-2 | 24 | 0.15 [.006] | 04041 | 192043-8 | OBSOLETE |
| A | [.28] | [.024] | -- | 12 | 6 [.237] | UNPL | 24 | 0.15 [.006] | 04042 | 192043-7 | △19 |
| A | [.28] | [.024] | -- | 12 | 5.54 [.218] | 1-2 | 23 | 0.15 [.006] | 04146 | 192043-6 | |
| A | [.28] | [.024] | -- | 12 | 5.54 [.218] | UNPL | 23 | 0.15 [.006] | 04143 | 192043-5 | OBSOLETE |
| A | -- | -- | -- | 12 | 5.5 [.217] | 3-2 | 21 | 0.20 [.008] | 04040 | 192043-4 | OBSOLETE |
| A | [.27] | [.024] | -- | 12 | 5.5 [.217] | 3-2 | 21 | 0.15 [.006] | 04105 | 192043-3 | OBSOLETE |
| A | [.26] | [.024] | -- | 12 | 5 [.197] | 3-2 | 20 | 0.15 [.006] | 04215 | 192043-2 | |
| A | [.26] | [.024] | -- | 12 | 5 [.197] | UNPL | 20 | 0.15 [.006] | 04216 | 192043-1 | △19 |



STYLE A
(FEMALE)

STYLE C
(STRIP)

- FINISH-SILVER PLATE 200 μINCH THICK MIN.
- FINISH-NICKEL PLATE 40 μINCH THICK MIN.
- FINISH-GOLD PLATE 10 μINCH THICK MIN.
- FINISH
- FINISH-GOLD PLATE 40 μINCH THICK MIN.
- FINISH-TIN PLATE 300 μINCH THICK MIN.
- FINISH-GOLD PLATE 50 μINCH THICK MIN.
- FINISH-NICKEL PLATE 100 μINCH THICK MIN.
- FINISH-PREPLATE
-
- PLATING NOTES ARE TO BE INTERPRETED AS FOLLOWS, 6-8 AS 6 OVER 8.
- MATERIAL-CDA172, BeCu.
- MATERIAL-STAINLESS STEEL
- PRODUCT IS SOLD BY THE FOOT.

- △15 OBSOLETE (PENDING).
- △16 MATERIAL: ELGILOY.
- △17 PRELIMINARY PART NUMBER.
- △18 FINISH: COPPER PLATE 10 μINCH THICK MIN.
- △19 OBSOLETE PARTS: OBSOLETE CIS STREAMLINING PER D.RENAUD/D.SINISI

| STYLE | (FREE DIA) | LH | LENGTH | MAT'L (NOTE) | MATING PIN φ REF | PLATING (NOTE NO.) | NUM LOUV | MAT'L THK | REF | PART NUMBER |
|-------|------------|----|--------|--------------|------------------|--------------------|----------|-----------|-----|-------------|
|-------|------------|----|--------|--------------|------------------|--------------------|----------|-----------|-----|-------------|

THIS DRAWING IS A CONTROLLED DOCUMENT.

| | | |
|------------------|-----------|--------------|
| DWN | 09-21-91 | RA JAYNE |
| CHK | 07-21-93 | J.TURNER |
| APVD | - | - |
| PRODUCT SPEC | - | |
| APPLICATION SPEC | - | |
| WEIGHT | - | - |
| CUSTOMER DRAWING | SCALE 1:1 | SHEET 1 of 2 |

TE Connectivity

CONTACT BAND, FEMALE

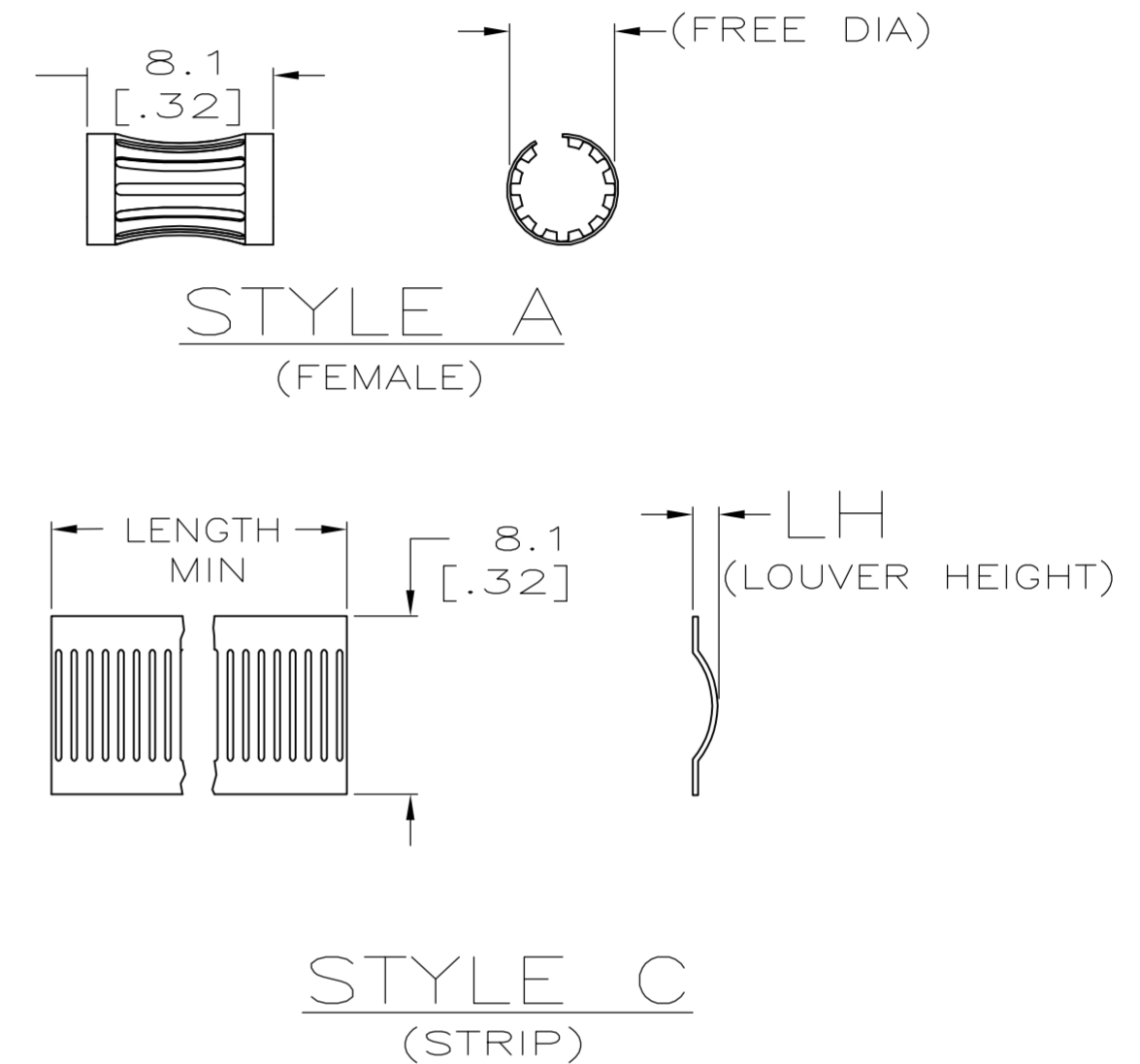
SIZE A2 CAGE CODE 00779 DRAWING NO. 192043 RESTRICTED TO -

REVISIONS: REV V

THIS DRAWING IS UNPUBLISHED. RELEASED FOR PUBLICATION
 © COPYRIGHT - By - ALL RIGHTS RESERVED.

| LOC | DIST | REVISIONS | | | | | |
|-----|------|-----------|-----|-------------|------|-----|------|
| FT | 0 | P | LTR | DESCRIPTION | DATE | DWN | APVD |
| | | - | - | SEE SHEET 1 | - | - | - |

| STYLE | (FREE DIA) | LH | LENGTH | MAT'L (NOTE) | MATING PIN ϕ REF | PLATING (NOTE NO.) | NUM LOUV | MAT'L THK | REF | PART NUMBER |
|-------|------------|--------|---------|--------------|-----------------------|--------------------|----------|-------------|-------|-------------|
| A | [.09] | [.024] | -- | 12 | 1.57 [.062] | 3-2 | 7 | 0.12 [.005] | -- | 9-192043-9 |
| A | [.21] | [.026] | -- | 12 | 4.39 [.173] | 3-18 | 17 | 0.15 [.006] | -- | 9-192043-8 |
| A | [.17] | [.026] | -- | 16 | 3.17 [.125] | 3-2 | 13 | 0.12 [.005] | -- | 9-192043-7 |
| A | [1.00] | [.026] | -- | 12 | 18.4 [.725] | 1-2 | 73 | 0.15 [.006] | -- | 9-192043-6 |
| C | -- | [.038] | NOTE 14 | 12 | -- | 1-2 | 9 | 0.15 [.006] | -- | 9-192043-5 |
| A | [.16] | [.026] | -- | 12 | 3.2 [.125] | 3-2 | 11 | 0.15 [.006] | -- | 9-192043-4 |
| A | [.21] | [.026] | -- | 12 | 3.98 [.157] | 1-2 | 14 | 0.15 [.006] | -- | 9-192043-3 |
| A | [.21] | [.026] | -- | 12 | 3.98 [.157] | UNPL | 14 | 0.15 [.006] | -- | 9-192043-2 |
| C | -- | [.016] | NOTE 14 | 12 | -- | UNPL | -- | 0.12 [.005] | -- | 9-192043-1 |
| C | -- | [.030] | NOTE 14 | 12 | -- | UNPL | -- | 0.15 [.006] | -- | 9-192043-0 |
| A | [.58] | [.024] | -- | 12 | 11.1 [.439] | UNPL | 44 | 0.20 [.008] | -- | 8-192043-9 |
| A | [.50] | [.024] | -- | 12 | 10.4 [.410] | UNPL | 40 | 0.20 [.008] | -- | 8-192043-8 |
| -- | -- | -- | -- | -- | -- | -- | -- | -- | -- | 8-192043-7 |
| A | [.40] | [.024] | -- | 12 | 10.4 [.408] | 1-2 | 40 | 0.15 [.006] | 04220 | 8-192043-6 |
| A | [.29] | [.024] | -- | 12 | 6.3 [.250] | UNPL | 26 | 0.20 [.008] | -- | 8-192043-5 |
| A | [.26] | [.024] | -- | 12 | 5.5 [.217] | UNPL | 21 | 0.15 [.006] | -- | 8-192043-4 |
| C | -- | [.026] | NOTE 14 | 12 | -- | UNPL | -- | 0.15 [.006] | -- | 8-192043-3 |
| A | [.19] | [.024] | -- | 12 | 4.7 [.187] | UNPL | 18 | 0.15 [.006] | -- | 8-192043-2 |
| C | -- | [.030] | [.46] | -- | -- | UNPL | 15 | 0.15 [.006] | -- | 8-192043-1 |
| A | [.17] | [.028] | -- | 12 | 3.2 [.125] | 7-2 | 13 | 0.15 [.006] | -- | 8-192043-0 |
| A | [.65] | [.024] | -- | 12 | 15.3 [.602] | UNPL | 60 | 0.15 [.006] | 04224 | 7-192043-9 |
| C | -- | [.036] | NOTE 14 | 12 | -- | 1-2 | -- | 0.15 [.006] | -- | 7-192043-8 |
| A | [.16] | [.026] | -- | 12 | 3.17 [.125] | UNPL | 11 | 0.15 [.006] | 04229 | 7-192043-7 |
| A | [.21] | [.024] | -- | 12 | 3.98 [.157] | 1-2 | 15 | 0.15 [.006] | 04230 | 7-192043-6 |
| A | [.06] | [.018] | -- | 12 | .6 [.025] | UNPL | 4 | 0.12 [.005] | 04225 | 7-192043-5 |
| A | [.16] | [.026] | -- | 12 | 3.2 [.125] | 8 | 11 | 0.15 [.006] | 04227 | 7-192043-4 |
| C | -- | [.026] | NOTE 14 | 12 | -- | 1-2 | -- | 0.12 [.005] | 04001 | 7-192043-3 |
| A | [.16] | [.026] | -- | 12 | 3.2 [.125] | 1-2 | 11 | 0.15 [.006] | 04228 | 7-192043-2 |
| C | [.16] | [.036] | .37 | 12 | -- | UNPL | 12 | 0.15 [.006] | 04221 | 7-192043-1 |
| -- | -- | -- | -- | -- | -- | -- | -- | -- | -- | 7-192043-0 |
| A | -- | -- | -- | 12 | 25.4 [1.00] | 7-2 | -- | 0.20 [.008] | 04058 | 6-192043-9 |
| A | -- | -- | -- | 12 | 18 [.709] | 7-2 | -- | 0.20 [.008] | 04056 | 6-192043-8 |
| A | [.65] | [.024] | -- | 12 | 15.3 [.602] | 7-2 | 60 | 0.15 [.006] | 04074 | 6-192043-7 |
| A | -- | [.024] | -- | 12 | 12 [.472] | 8 | 48 | 0.20 [.008] | 04172 | 6-192043-6 |
| A | [.72] | [.024] | -- | 12 | 12 [.472] | 3-2 | 48 | 0.20 [.008] | 04090 | 6-192043-5 |
| A | [.72] | [.024] | -- | 12 | 12 [.472] | 1-2 | 48 | 0.20 [.008] | 04095 | 6-192043-4 |
| A | [.72] | [.024] | -- | 12 | 12 [.472] | UNPL | 48 | 0.20 [.008] | 04096 | 6-192043-3 |
| A | -- | -- | -- | 12 | 12 [.472] | 3-2 | 48 | 0.15 [.006] | 04055 | 6-192043-2 |
| A | -- | -- | -- | 12 | 12 [.472] | 1-2 | 48 | 0.15 [.006] | 04091 | 6-192043-1 |
| A | [.58] | [.024] | -- | 12 | 11.1 [.439] | 3-2 | 44 | 0.20 [.008] | 04205 | 6-192043-0 |
| A | [.58] | [.024] | -- | 12 | 11.1 [.439] | 1-2 | 44 | 0.20 [.008] | 04201 | 5-192043-9 |
| A | [.57] | [.024] | -- | 12 | 10.4 [.410] | 3-2 | 40 | 0.20 [.008] | 04154 | 5-192043-8 |
| A | [.50] | [.024] | -- | 12 | 10.4 [.408] | 3-2 | 40 | 0.15 [.006] | 04186 | 5-192043-7 |
| A | [.50] | [.024] | -- | 12 | 10.4 [.408] | UNPL | 40 | 0.15 [.006] | 04187 | 5-192043-6 |
| A | [.50] | [.024] | -- | 12 | 9.5 [.375] | 1-2 | 38 | 0.20 [.008] | 04115 | 5-192043-5 |
| A | [.50] | [.024] | -- | 12 | 9.5 [.375] | UNPL | 38 | 0.20 [.008] | 04176 | 5-193043-4 |
| A | [.45] | [.030] | -- | 12 | 9.5 [.375] | 3-2 | 38 | 0.18 [.007] | 04209 | 5-192043-3 |
| A | [.45] | [.030] | -- | 12 | 9.5 [.375] | 6 | 38 | 0.18 [.007] | 04207 | 5-192043-2 |
| A | [.45] | [.030] | -- | 12 | 9.5 [.375] | UNPL | 38 | 0.18 [.007] | 04208 | 5-192043-1 |



192043

B

A

A

| | | | | |
|--|--|-----------------------|---|--------------|
| THIS DRAWING IS A CONTROLLED DOCUMENT. | | DWN RA JAYNE 09-21-91 | STE TE Connectivity | |
| DIMENSIONS: mm[inches] | | CHK J.TURNER 07-21-93 | | |
| TOLERANCES UNLESS OTHERWISE SPECIFIED: | | APVD -- | NAME | |
| 0 PLC ± - | | PRODUCT SPEC | CONTACT BAND, FEMALE | |
| 1 PLC ± - | | APPLICATION SPEC | SIZE CAGE CODE DRAWING NO RESTRICTED TO | |
| 2 PLC ± 0.5 [.02] | | WEIGHT -- | A2 00779 | C=192043 |
| 3 PLC ± 0.25 [.010] | | CUSTOMER DRAWING | SCALE 1:1 | SHEET 2 of 2 |
| 4 PLC ± - | | | | REV V |
| ANGLES ± - | | | | |
| FINISH SEE TABLE | | | | |